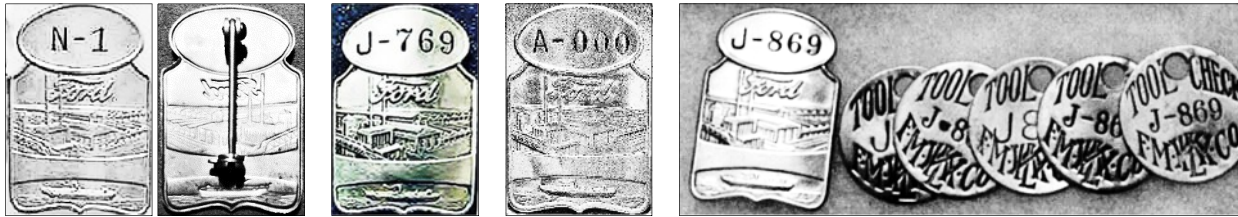


CANADA

**B. OVAL TOP EMPLOYEE BADGES – TENTATIVE ATTRIBUTION TO CANADA**

This attribution is tentative. No oval top badges with the word “CANADA”, name of a Canadian city or a Canada plant name have been documented. The tool checks shown are brass and the style has been documented as having been issued in Canada. See section C, part 4 below.



Location: Canada (tentative)  
 Vintage: circa 1932 - 1936  
 Composition:

Dimensions: 43mm H by 31mm W  
 Manufacturer’s Mark: none  
 Manufacturer: Whitehead & Hoag, Newark, NJ

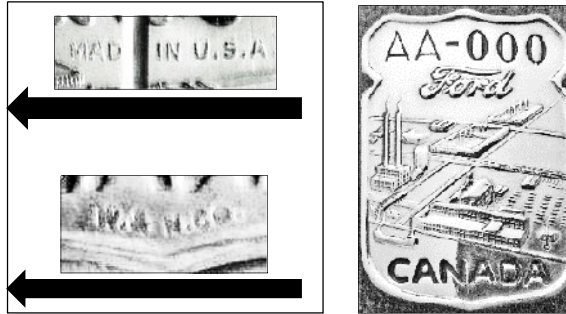
**C. TYPE I SHIELD EMPLOYEE BADGES**

**1. TYPE I SHIELD**



Location: Canada  
 Vintage:  
 Composition  
 Dimensions:

**2. MANUFACTURER’S SAMPLE**



Mfg. Mark: MADE IN U.S.A. (reverse top of factory scene)  
 W. & H. CO. (reverse bottom)  
 Manufacturer: Whitehead & Hoag Co., Newark, NJ  
 Comment:

**3. ADDITIONAL EXAMPLES**



**4. TYPE I SHIELD AND MATCHING TOOL CHECK**



This brass tool check was listed on EBay by a resident of Canada. When contacted, he stated that the tool check and a matching number badge were issued to and purchased from a retired Canada Ford Motor Company worker.