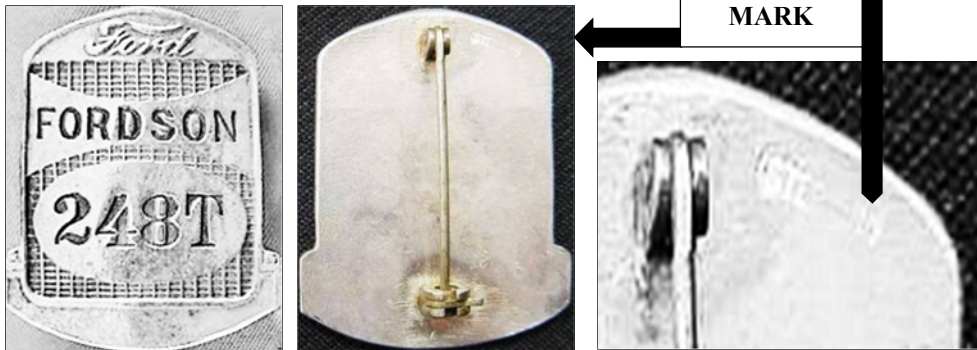


**B. REPRODUCED FORD RADIATOR EMPLOYEE BADGE ARTICLE EXCERPT**

Among the most expensive fakes are the Ford factory employee badges. The most consistent is a FORDSON badge offered in base metal and sterling silver ALL WITH THE SAME BADGE NUMBER 248T. Two badges with the same number can not be legitimate, as badges were required to be shown by the employee when collecting his weekly pay in cash. As a result a lost Ford badge was never replaced - a badge with a new number was issued. (Fordson was the name of the Ford Rouge plant between 1926 and 1929.)

**Source:** Article: "Ford Collectibles: Fakes, Fantasies and Unbelievables"; Publication: *The Ford Legend*; Publisher: Henry Ford Heritage Association; Author: Tim O'Callaghan; Date: 2005

**1. RADIATOR BADGE 248T- STERLING SILVER****a. SHORT PIN VARIETY - 38MM H BY 26MM W****b. LONG PIN VARIETY - 38MM H BY 26MM W**